

THANK YOU for purchasing from Smith+Noble. Your new hardware has been custom-crafted from the highest quality materials. Once installed, your hardware will provide you with a lifetime of beauty and trouble-free use.

INSTALLING your new hardware is easy. Simply follow our step-by-step instructions. We recommend that you read through all the instructions before you start. If you have questions, our customer service representatives are available at 800.780.8889.

GETTING STARTED

REMOVE the hardware from the packaging.

Do not dispose of packaging until the hardware is installed to your satisfaction.

Check the diagram to make sure you have all the parts indicated for the appropriate type of installation.

TOOLS you may need to install your hardware: pencil, screwdriver, 1/2" nut driver, level, pliers and a drill with 7/64" drill bit.

Your hardware brackets must be securely attached to the mounting surface. When screwing into a surface, the included screws must hit wood studs. Otherwise, use a secure fastener as illustrated (not included).

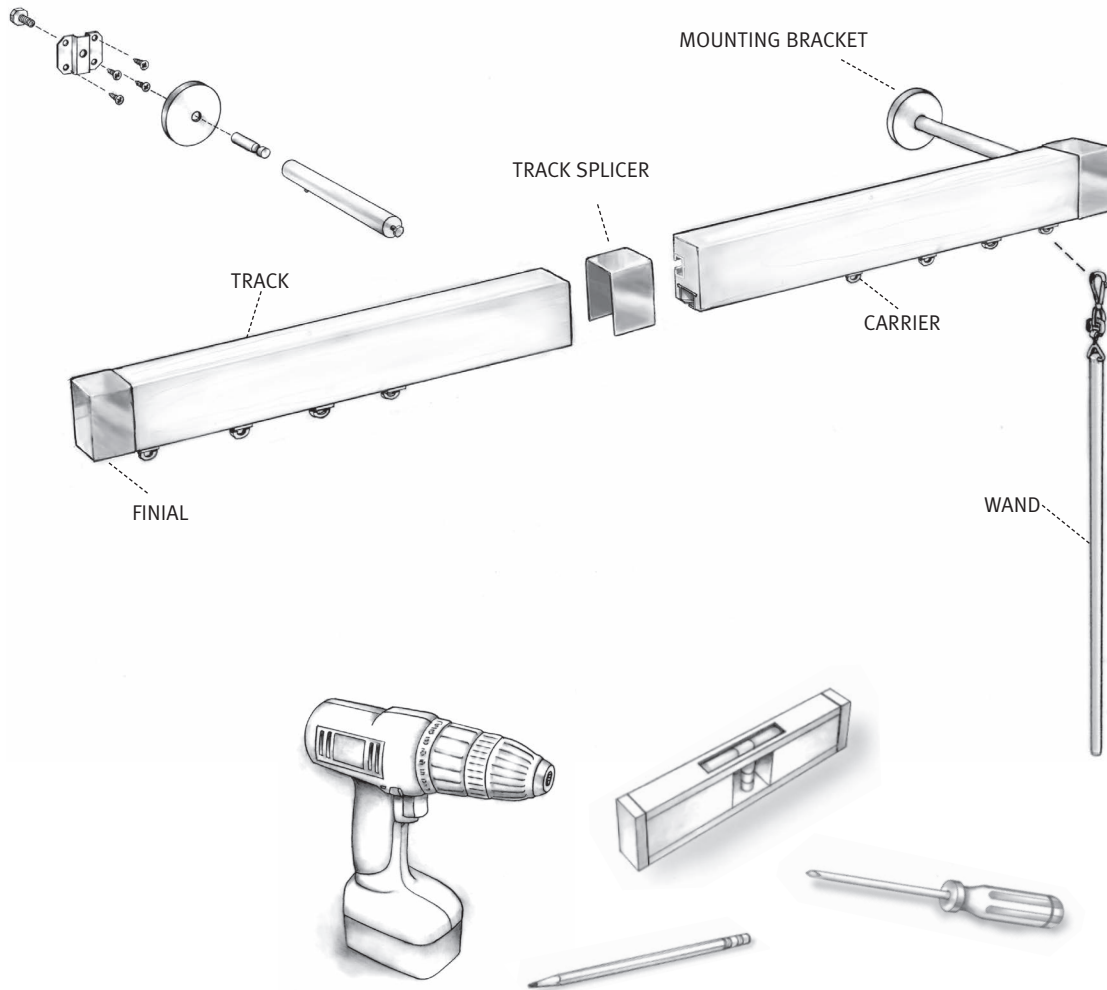
WALLBOARD OR PLASTER:

Use a secure fastener designed for hollow wall applications.

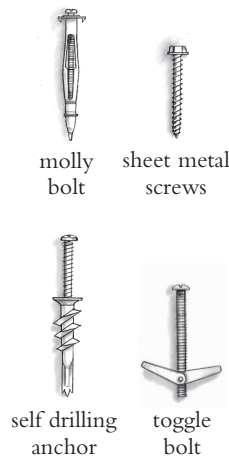
METAL: Pre-drill holes and use sheet metal screws.

CONCRETE, STONE, BRICK OR TILE: Use a masonry drill and appropriate plugs, anchors or screws.

*When selecting a fastener, make sure it is designed to support the weight of the product being installed. Follow the fastener manufacturer's instructions for proper installation of the fastener.

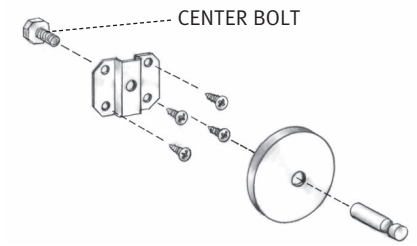


NOTE: When installing screws with a drill, be careful not to over tighten. This may cause the screw to break off in the wall or window frame.



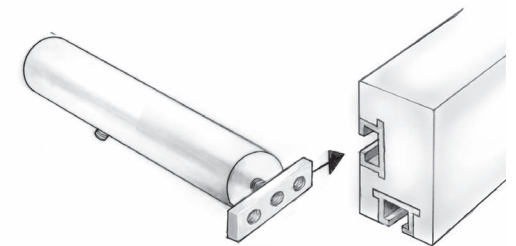
For assistance, call Smith+Noble
Customer Service at
800.280.8888
Visit our website at
smithnoble.com

STEP 2 Mounting the Brackets



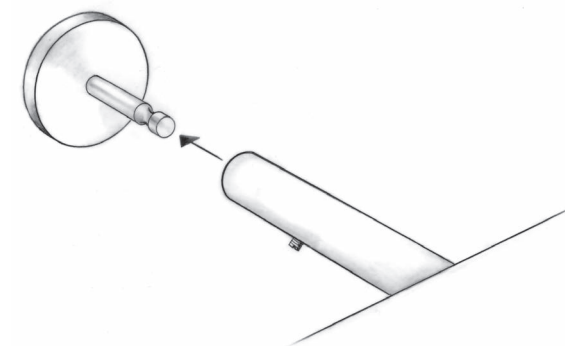
Center the track over the window opening at the desired height. Mark the position of the ends of the track on the wall. Attach the mounting brackets to the wall 2" inches in from the marks, making sure the mounting brackets are level with each other. Using the short screws and nuts provided, making sure the center bolt is in the hole before the bracket is mounted to the wall.

STEP 3 Insert Mounting Posts



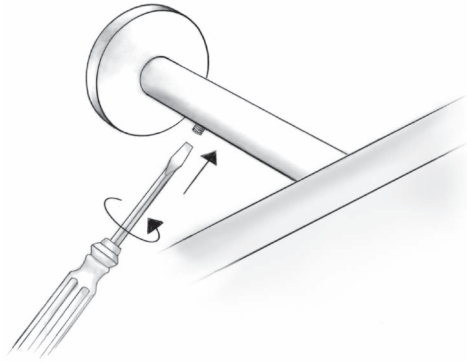
Insert the mounting posts into the channel in the back of the track. Do not tighten at this time.

STEP 4 Attaching track to Bracket



Align the mounting posts in the back of the track with the brackets mounted to the wall. Slide the mounting posts onto the brackets. Center the track over the widow opening by sliding the track left or right on the posts. When the track is centered, rotate the posts clockwise to tighten against the track.

STEP 5 Tighten set screw



Tighten the set screw on the mounting post and install finials.

STEP 6 Attaching the Wand

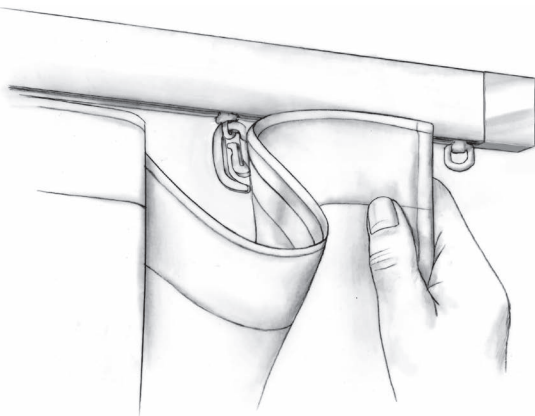


Placement of the wand will depend on the side you would like your window treatment to draw to. Draw to the left requires the wand to be on the right end of the track and just the opposite for right draw. Center draw option will have two wands, each attached on the inside clip of your drapery. The wand will clip onto the end carrier in each case.

Wave Fold Drapery Installation

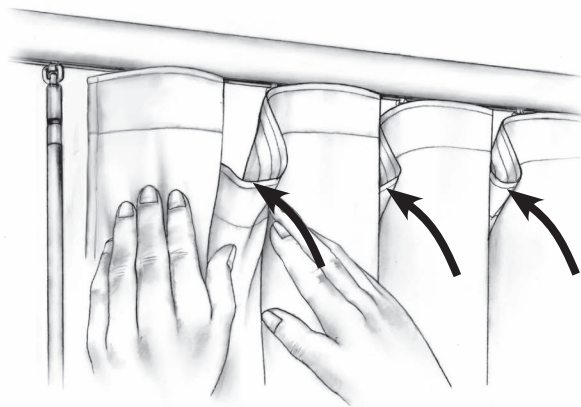
INSTALLING THE DRAPERY

Hook the drapery pin into the eyelet of the carriers Illustration of panel hooking into rod carriers step

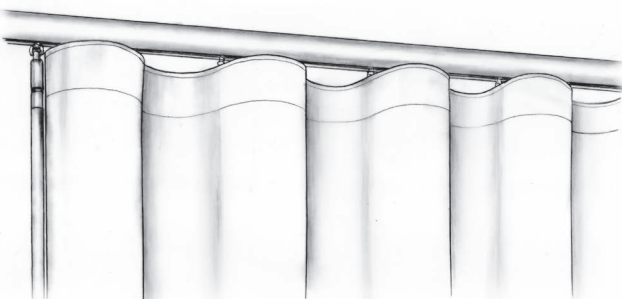


SETTING THE PLEATS

The Wave is created by forming an S shape in the header. Starting at the wand side, use your hands to push back or pull forward the fabric alternating between each clip, making sure the drapery edges return back to the wall.



Final Wave panel



Warranty

All Smith+Noble hardware is designed for a lifetime of trouble-free use and are covered by a limited lifetime warranty. This warranty applies to the original customer/installation with proof of purchase and covers any defects in materials or workmanship provided that the product is measured and installed according to the product instructions.

In the unlikely event that warranty service is ever needed, simply call customer service at **800.780.8889**. Our customer service representatives will arrange for a repair as quickly as possible.

Item SN1090-09/10

smith+noble®
reflect your style

Metro Track Hardware

Step by Step Installation

Customer Service 800.780.8889 or visit us online at smithnoble.com

